

THE 24 HOUR
EXPERIENCE:
BALLARAT IS
A CONTEMPORARY
VISION OF A TOWN,
A SERIES OF 24 LIVE
WORKS BY ARTISTS
AND ORDINARY
PEOPLE INSPIRED
BY THE POETIC
MINUTIAE OF
EVERYDAY LIFE



24HOUREXPERIENCE.COM.AU

THE 24 HOUR EXPERIENCE IS A LIVING DOCUMENTARY OF THE LESSER-HEARD PERSPECTIVES OF BALLARAT CREATED BY 150 ARTISTS AND 10 COMMUNITIES. THE EVENT UNFOLDS IN REAL TIME, OFFERING 24 DISTINCT LIVE WORKS IN A DIFFERENT BALLARAT LOCATION ON THE HOUR, EVERY HOUR, OVER TWENTY-FOUR HOURS. IT IS DESIGNED AS A MAJOR ONE-OFF HAPPENING; PLAYFUL AND PROVOCATIVE, IT PLACES EVERYDAY ENCOUNTERS AND UNCONVENTIONAL CONTEXTS AT THE CENTRE OF A UNIQUE PERFORMANCE EVENT.



TICKET PRICES

Tickets can be purchased via our website, or from Her Majesty's Theatre 17 Lydiard St, South Ballarat · Ph: 5333 5888

24 HOUR PASS



\$150/fully catered

12 HOUR PASS



**Noon to midnight
or midnight to noon
\$80/includes 2 meals
and snacks**

6 HOUR PASS



**\$50 /includes a
meal and snack**


HQ



The 24 Hour Experience HQ will be at 34 Lydiard Street South from 11am 21st November until 12pm 22nd November 2015.

Arrive on time to receive your 24 Hour Experience survival pack.

The 24 Hour Experience has been supported by The Australia Council for the Arts and the City of Ballarat, produced by Metanoia Theatre.

24hourexperience.com.au

info@24hourexperience.com.au ·  0415 768 996

 #24hourballarat ·  facebook.com/24hourexperienceballarat

Original concept and curation
Gorkem Acaroglu

Lead artists
Diokno Pasilan, Rebecca Russell, Lynden Nicholls, Al Wunder, Michelle Dunn, Alisa Tanaka-King, Ashley Heenan, Stella Savy, Alison Shirley, Rose Turtle Ertler

Project Manager
Margaret Dobson

City of Ballarat Liaison
Deborah Klein

Lighting Designer
Bronwyn Pringle

Production Managers
Bec Anderson and Ainsley Kerr

Photography
Michelle Dunn

Publicist
Fiona Brooks from Zilla & Brook
Publicity zillaandbrook.com.au



This project has been assisted by the Australian Government through the Australia Council for the Arts, its arts funding and advisory body.
Design by tim@hypergraphia.com.au · Identity Illustration Zoe Miller and Peter Sparkman · Website 39design

Events

BLACK HILL – a long way to the top



Local Aboriginal Elder of the Wadawurrung Bryon Powell opens the 24 Hour Experience Ballarat from the top of Black Hill which gives a 180 degree view of Ballarat and shows remnants of the open cut gold mine. What Bryon will tell, might surprise you.

Noon

Sat 21st Nov



TRAVEL



6 min

TO

BLACK HILL LOOKOUT

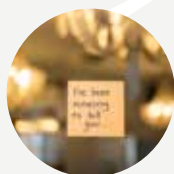
Meet at Bus Stop 8 Lydiard St, Bus drives to Black Hill Lookout, Sims St Black Hill

BRYON POWELL LEAD ARTIST

CONSULTANT

REBECCA RUSSELL

Death Over Lunch



Sharing a meal is often a great way to open up conversations. Join us for lunch at the Provincial Hotel & allow artist Michelle Dunn, in collaboration with the Bereavement Network to introduce you to a candid approach to death & dying.

1pm



TRAVEL



5 min

TO

PROVINCIAL HOTEL

121 Lydiard St North

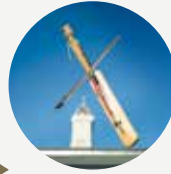
LUNCH



MICHELLE DUNN LEAD ARTIST

THE BEREAVEMENT NETWORK

D & U3A



2pm



A collaborative piece with Ballarat's senior citizens that explores the contemporary and traditional practice of making music using conventional and traditional instruments in a spontaneous presentation through the site specific location of the train station of Ballarat.

TRAVEL



1 min

TO

TRAIN STATION

Lydiard St North

DIOKNO PASILAN LEAD ARTIST

PARTICIPANTS **U3A CELTIC BAND**

The Healing Maneuver



3pm



A contemporary dance exploration of the experience of working in the hub of cancer treatment for a region.

TRAVEL



3 min

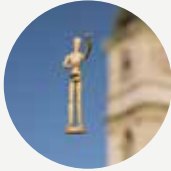
TO

**BALLARAT REGIONAL
INTEGRATED CANCER
CENTRE** Corner Sturt and Drummond St

ALISON SHIRLEY CHOREOGRAPHER

Events

Day Voices



Five Ballarat residents stand on plinths in the centre of town as we watch and listen to their stories. Our eyes, ears and spirits are raised by the voices of three choral singers emanating from towers dominating the site. Voices celebrates both the pedestrian and the iconic, people and buildings.

4pm

TRAVEL



3 min TO

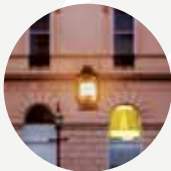
**CORNERS STURT ST
& LYDIARD ST**



LYNDEN NICHOLLS LEAD ARTIST

COMPOSER **CHRISTINE TAMMER** PERFORMERS **JUEL
MARK, CLAIRE DE NATRIS, NEIL REITHER,
MARG DOBSON, JEMIMA BRACKLEY**

Seeing Stories



Under street light, stories and true life anecdotes in a performance from the local Deaf community. Street lights were traditionally used by the Deaf community as meeting points to connect with each other and find their place in the world.

5pm

TRAVEL



1 min

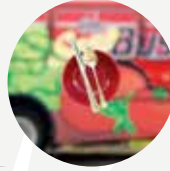
TO

GAS LIGHT T intersection of Sturt St
and Grenville St



AUSTRALIAN THEATRE OF THE DEAF
in collaboration with **THE LOCAL DEAF COMMUNITY**

Soup Bus



Dinner and an experience of homelessness in Ballarat.

6pm



TRAVEL  9 min TO **CIVIC HALL**
300 Mair St

ON TRACK FOUNDATION INC

Listen to Me



An improvisation piece that showcases Ballarat senior citizens experimentation with sound instruments created from found objects. Each participant will play handmade instrument through a series of workshops, performed in the iconic Karova Bar over a drink.

7pm



TRAVEL  9 min TO **BAR KAROVA**
15 Field St

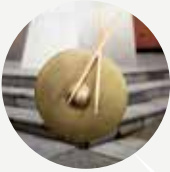
DRINK



DIOKNO PASILAN LEAD ARTIST
PARTICIPANTS **USA CELTIC BAND**

Events

Band on Every Corner



Three live bands play for one hour on three streets of Ballarat. These are an eclectic mix of styles, genres and forms: a String Quartet, a Heavy Metal Youth Band and an acoustic ensemble. This free event is designed to bring into focus the incredible diversity and richness of Ballarat's live music culture.

8pm

TRAVEL



9 min

TO

ALFRED DEAKIN ANNEX rear of Art Gallery, Rear of **MINING EXCHANGE** and **FEDERATION UNIVERSITY COURTYARD**



FEAST OF CROWS METAL **KING PARK** ALTERNATIVE FOLK **KARA KARA PLAYERS** STRING QUARTET

Inspirations



Part one of an interweaving of visual and performing arts. Slide projections of evolved drawings inspired by improvisation form a backdrop to the actual performance. The unplanned improvisations start with a playful trio that acts as an inspiration for themes of ensuing solos. Sometimes humorous, sometimes insightful, always thought provoking.

9pm

TRAVEL



4 min

TO

FEDERATION UNIVERSITY Old Law Courts Building, 3 Camp St



ROSALIND LAWSON VISUAL ARTIST
PERFORMANCE ARTISTS **AL WUNDER, ROBYN SEDGWICK, JULIANNE EVELEIGH**

Seeing Stories 2



Deaf culture is based on visual orientation and in this work, 'performed stories' are created in Auslan & Visual Vernacular, recreating historic meetings of deaf people under streetlights to talk and communicate.

TRAVEL



2 min

TO

GAS LIGHT T intersection of Sturt St and Grenville St

10pm



AUSTRALIAN THEATRE OF THE DEAF in collaboration with **THE LOCAL DEAF COMMUNITY**

Night Voices



From admiring common folk at ground level our eyes, ears and spirits are raised by the voices of three singers emanating from towers dominating the site. Voices celebrates both the pedestrian and the iconic, people and buildings. Each performance incorporates movement, narrative, stillness, chant and song.

TRAVEL



4 min

TO

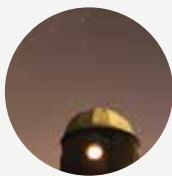
CORNERS STURT ST & LYDIARD ST

11pm



LYNDEN NICHOLLS LEAD ARTIST
COMPOSER **CHRISTINE TAMMER**
SINGERS **PAIGE DUGGAN,**
BARRY KAY, JUDY READ


Events



Playful, Curious, Cosmos

A journey into understanding the Universe.

TRAVEL  5 min TO **OBSERVATORY**

MIDNIGHT SNACK  Meet at Bus Stop 8 Lydiard St. Bus goes to Observatory, 439 Cobden St Mount Pleasant

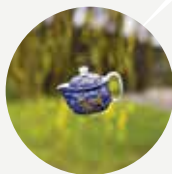
12am



GORKEM ACAROGLU LEAD ARTIST
PERFORMER **SAEED SALIMPOUR**

Under a Willow – A Long Way From China

Under a forgotten willow, an unexpected scene unfolds. A dancer interprets the voice of Ballarat elder Aunt Mary, speaking of her day, her memories, music and dance, revealing and challenging perceptions of the Chinese in Ballarat. *One woman, 24 hours, a pot of tea, Chinese ancestors, Ballarat now.*



1am



TRAVEL  3 min TO **EASTERN TOWN HALL GARDENS** 32 Barkly St

TEA 
REBECCA RUSSELL LEAD ARTIST
DESIGNER **KEN EVANS** PERFORMER **JANETTE HOE**

Singing Room



In the library of precious and rare collections, 176 books printed before 1800, 5,000 before 1900 and newspapers like the Ballarat Times of 1856, be serenaded by a choir in this rarefied space. Celebrating the light filled room and old tomes with beautiful voices.

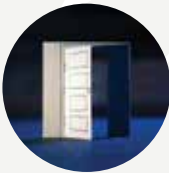
2am



TRAVEL  3 min TO Mechanics Institute **READING ROOM** 117 Sturt St

STELLA SAVY LEAD ARTIST

Things I am Not Afraid Of



If mental illness took physical form, what would it look like? This piece explores how we experience, address and illustrate perpetually invisible burdens, shining a creative light on an often misunderstood subject. Installations of performance, film, and projections fill the Lucas Arts Space.

3am



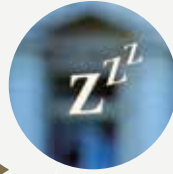
TRAVEL  11 min TO **LUCAS COMMUNITY HEALTH CENTRE**
12 Lilburne St Lucas

ALISA TANAKA KING LEAD ARTIST

PERFORMERS **MIKAELA WALLACE, TIM HARRIS, LISA HILL, ALEXANDRA MEERBACH, MARY-ROSE MCLAREN**

Events

SnoreScape



Snorescape will either lull you to sleep or annoy the hell out of you. The sound of snoring is turned into a rhythmical and layered soundscape, mildly amusing and extremely musical.

4am

TRAVEL



12 min

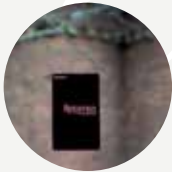
TO

**BALLARAT REGIONAL
TRADES & LABOUR
COUNCIL HALL** 24 Camp St



LYNDEN NICHOLLS LEAD ARTIST

Retrospective



25 years of training and developing young artists at Federation University, has been wisely archived. A spectacular sound and light show in the Courtyard mines the archives of the best music and performance to come out of Ballarat in the last quarter century.

TRAVEL



6 min

TO

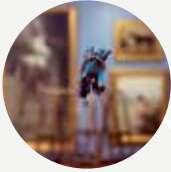
COURTYARD
Next to **COURTHOUSE**
THEATRE Lydiard St South

5am



REX HARDWARE LEAD ARTIST

Life of the Gallery



The Art Gallery of Ballarat opens its doors for a special event: With easels and materials do you draw or do you listen? The life models share their thoughts and experiences of where they go in the stillness and silence, through words, music and movement.

6am

TRAVEL



5 min

TO

ART GALLERY

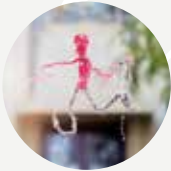
OF BALLARAT 40 Lydiard St North

BREAKFAST



LEAD ARTIST **MARG DOBSON** PARTICIPANTS **LIFE MODELS FROM THE GALLERY**

Labyrinths



Labyrinths completes the cross pollination of art forms consisting of an installation inspired by the improvisations of the previous evening. Collaboration and spontaneity form the cornerstone of these presentations. Impulsive play of improvised performance mixed with artistic visual creations offer the audience a unique view of how art inspires art.

7am

TRAVEL



2 min

TO

FEDERATION

UNIVERSITY Old Law Courts Building, 3 Camp St



ROSALIND LAWSON VISUAL ARTIST

PERFORMANCE ARTISTS **AL WUNDER, ROBYN**

SEDGWICK, JULIANNE EVELEIGH

TECHNICIAN AND SET DESIGNER **PETER SPARKMAN**

Events

Lets Talk About Death



Grab a coffee and listen to a short soundscape, then experience the Death Café movement that is spreading across the world. Opening up local Ballarat people's thoughts & experiences of death, this work allows the audience to break down the taboos around this usually dark topic.

8am

TRAVEL  5 min TO **PROVINCIAL HOTEL**

121 Lydiard St North

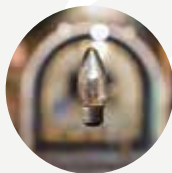


COFFEE AND CAKE 

MICHELLE DUNN LEAD ARTIST

THE BEREAVEMENT NETWORK

Light at the end ...



An intimate performance in one of Ballarat's iconic bluestone tunnels. Experience a dark space with a group of local refugees who share stories of "light" drawn from their life experiences.

9am

TRAVEL  5 min TO **MAIR ST TUNNEL**

Between 25 & 27 Mair St



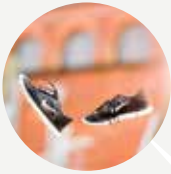
ETHIOPIAN TEA AND SWEET 

ROSE TURTLE ERTLER LEAD ARTIST

PARTICIPANTS Ballarat Rural Australians for Refugees

**ALI RAMIN BAKHTIAVANDI,
NYANCHAR DENG, SADIKI MUSAKA**

United Art of Movement



Parkour, martial arts tricking, gymnastics and different styles of dance performed by youth and young adults including a training session and insight into these inspirational arts.

TRAVEL



6 min

TO

ALFRED DEAKIN PLACE

5 Camp St

10am



**LUKE SANDERSON, DON NGUYEN
& ROMAIN HASSANIN** LEAD ARTISTS

PARTICIPANTS **UNITED ART OF
MOVEMENT**

Research



A day in the life of cancer research.

TRAVEL



5 min

TO

**FIONA ELSEY CANCER
RESEARCH INSTITUTE**

23 / 106-110 Lydiard St South

11am



GORKEM ACARGLU LEAD ARTIST

